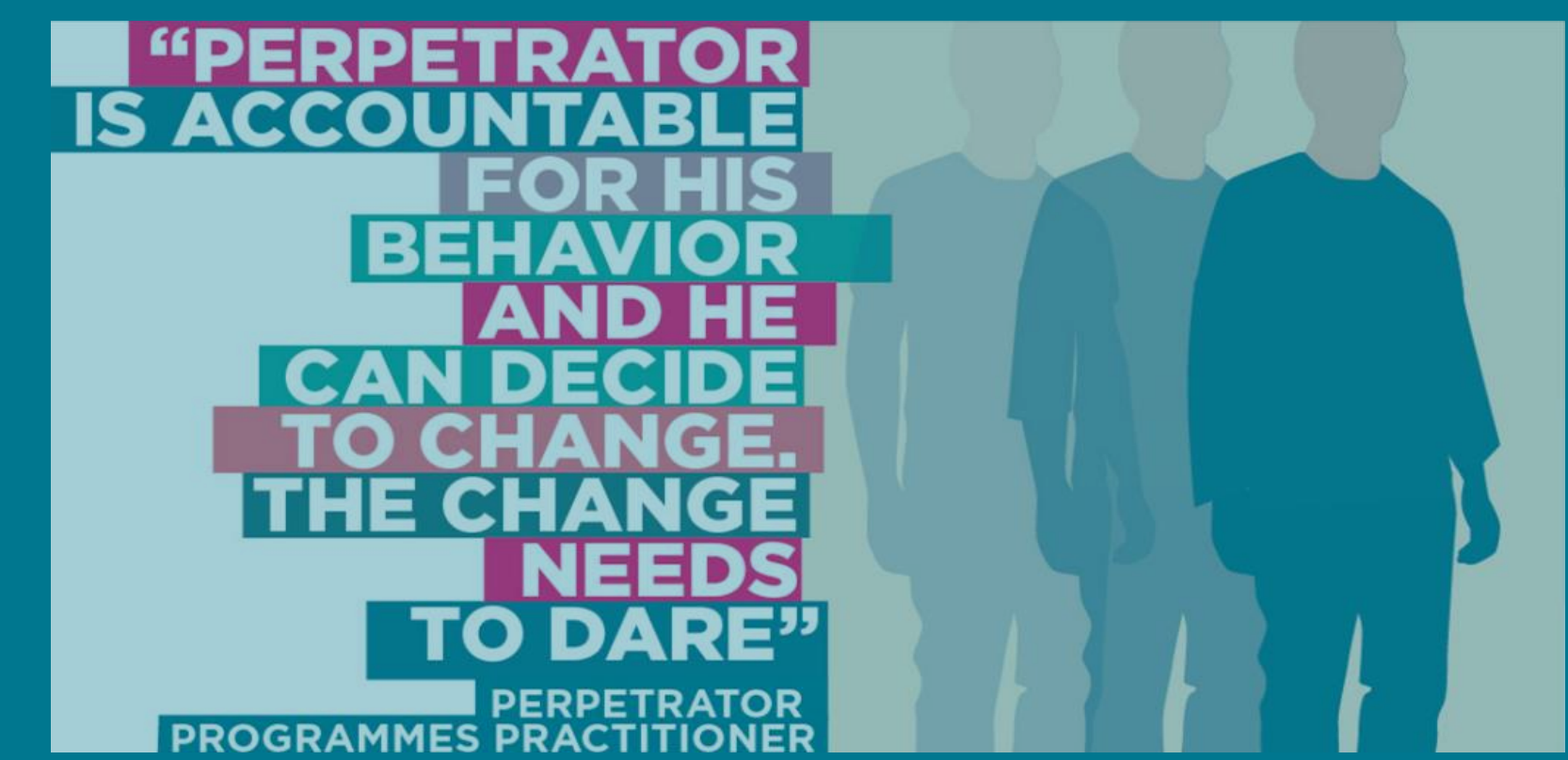


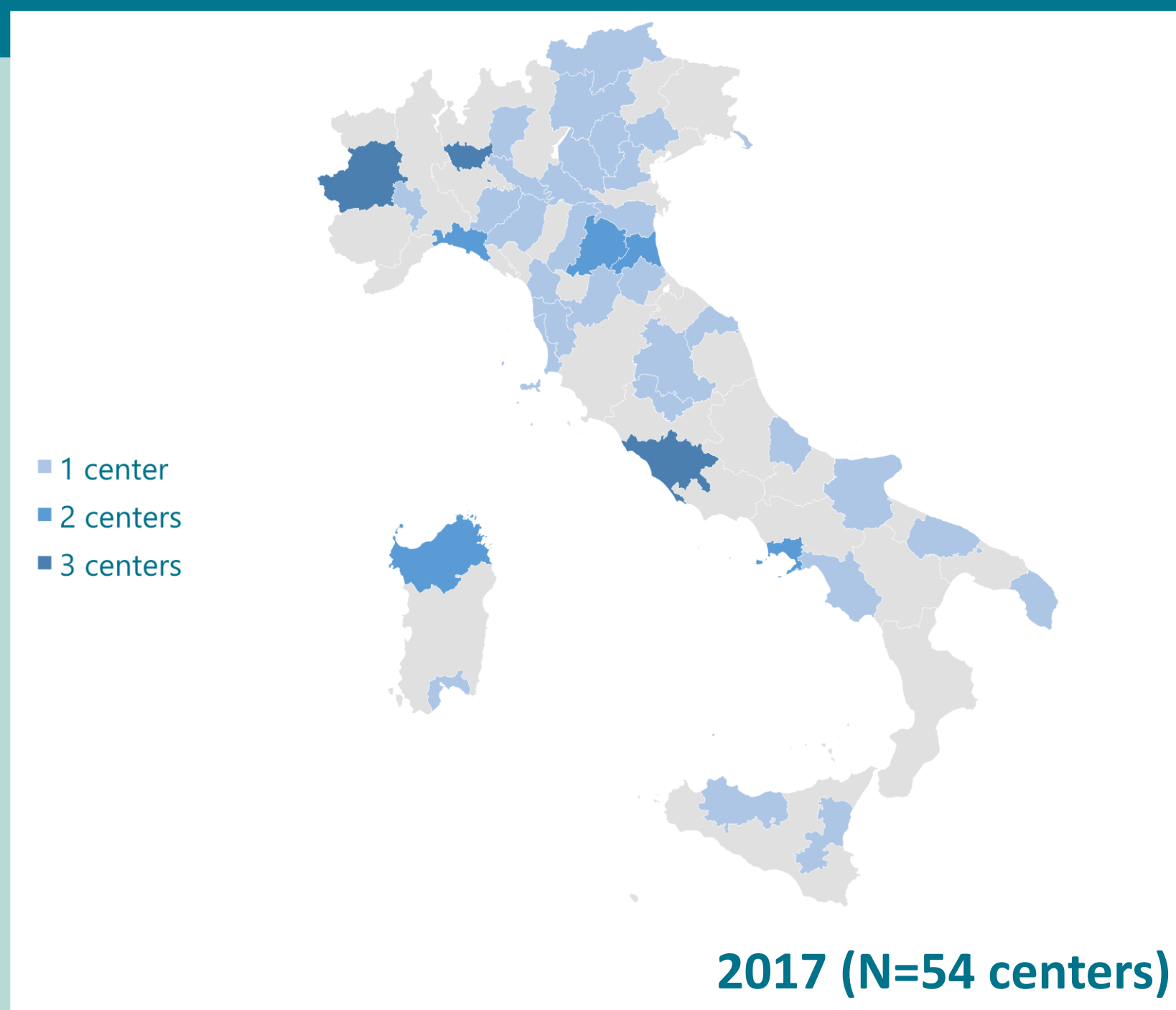
DEFINING THE EFFECTIVENESS OF PERPETRATOR PROGRAMS FROM A PRACTICE-BASED PERSPECTIVE

1st and 2nd National Survey on Perpetrators Programs

Pietro Demurtas and Caterina Peroni



EUROPEAN CONFERENCE ON DOMESTIC VIOLENCE - REYKJAVÍK 11-13 SEPT 2023



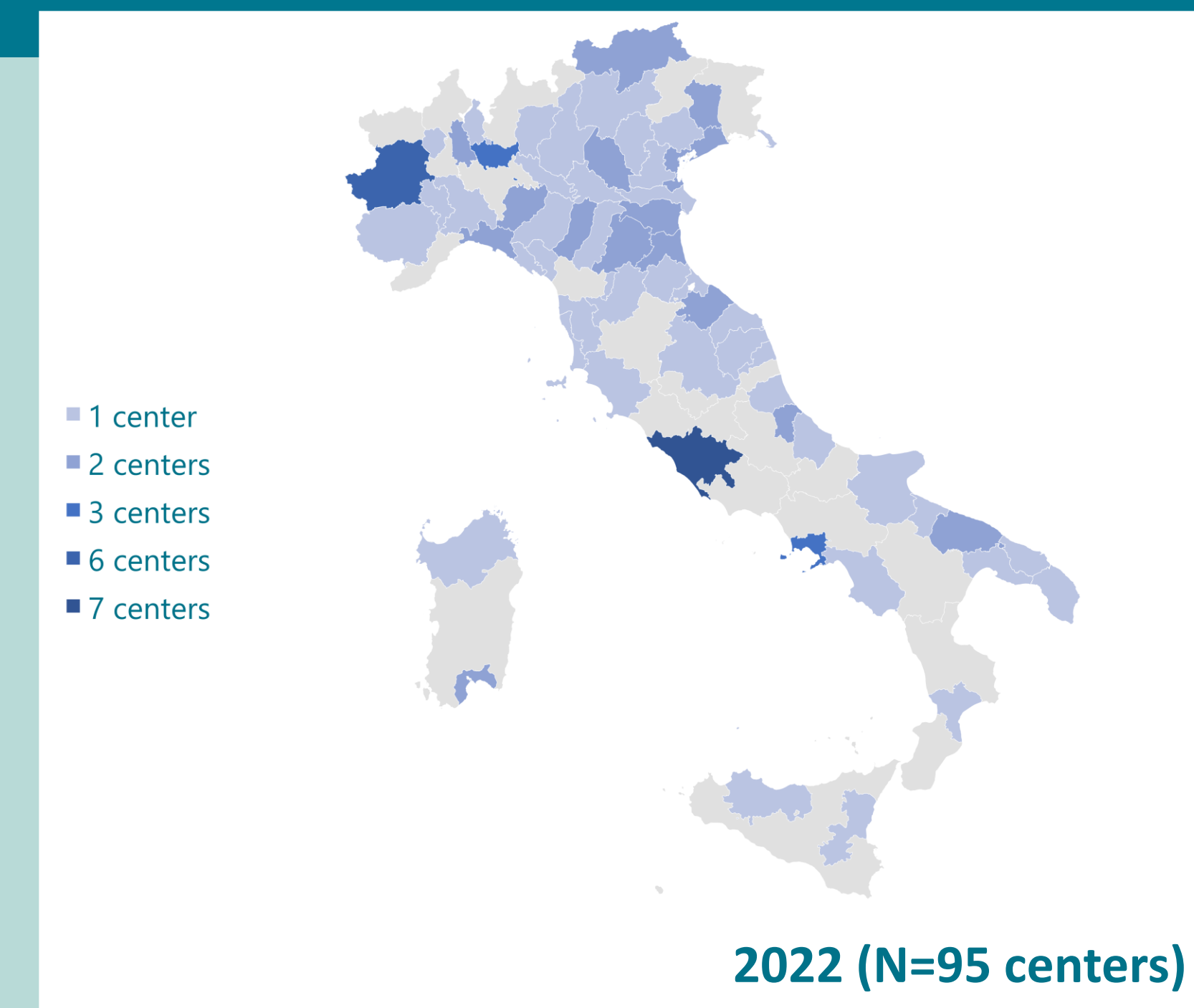
CHANGES between the 1st and 2nd National survey:

- Implementation of the "Red Code" law (2019), which increases compulsory access to programs from the criminal justice system
- Approval of the State-Regions Agreement on Minimum Requirements for Perpetrators Programs (2022)

← Increased number of Centers targeting perpetrators of VAW →

MAIN ISSUES ARISED IN THE NATIONAL DEBATE

- Are the programs really effective?
- How do they assess attitudinal and behavioural change?
- Could the safety of victims be compromised by their practices (e.g. contact with partners)?
- Is program access a shortcut for perpetrators to avoid prison?

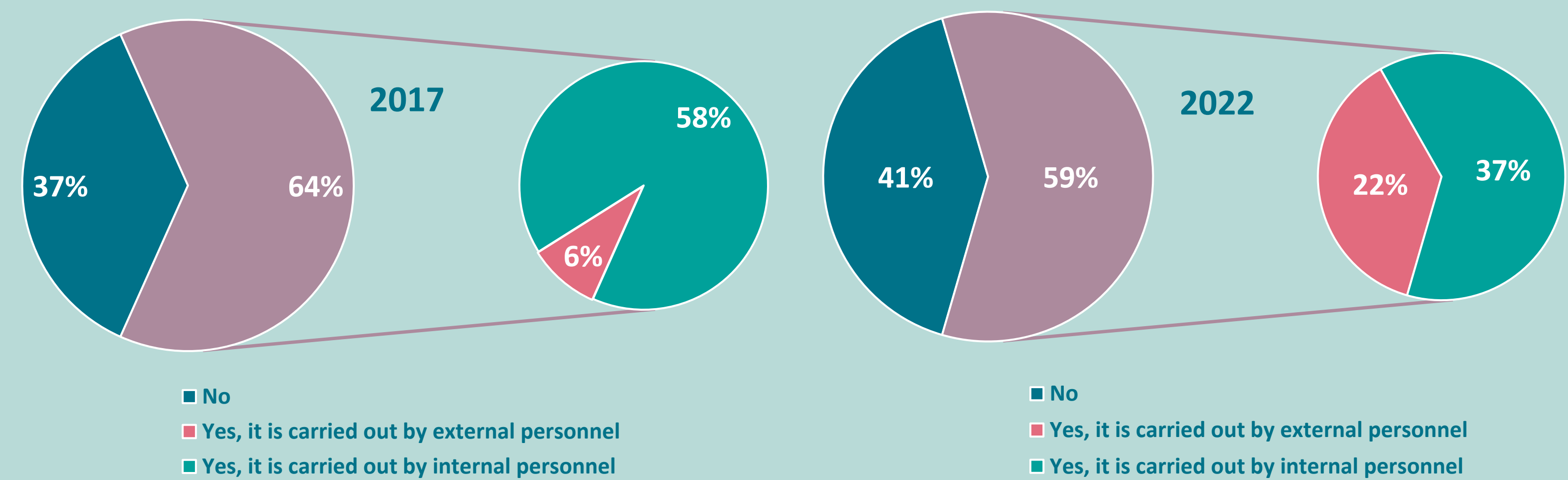


« They ask us for quantitative data that we cannot collect in a standardised way, with resources that are already very limited »

« How do we monitor? By continuing to work with the men. (...) That's it. We don't give certificates of change. We testify that it's been a year since the man told us he was no longer using violence, and if it's true, that's a great result »

« We have no idea whether our work has had an effect, whether it has been useful »

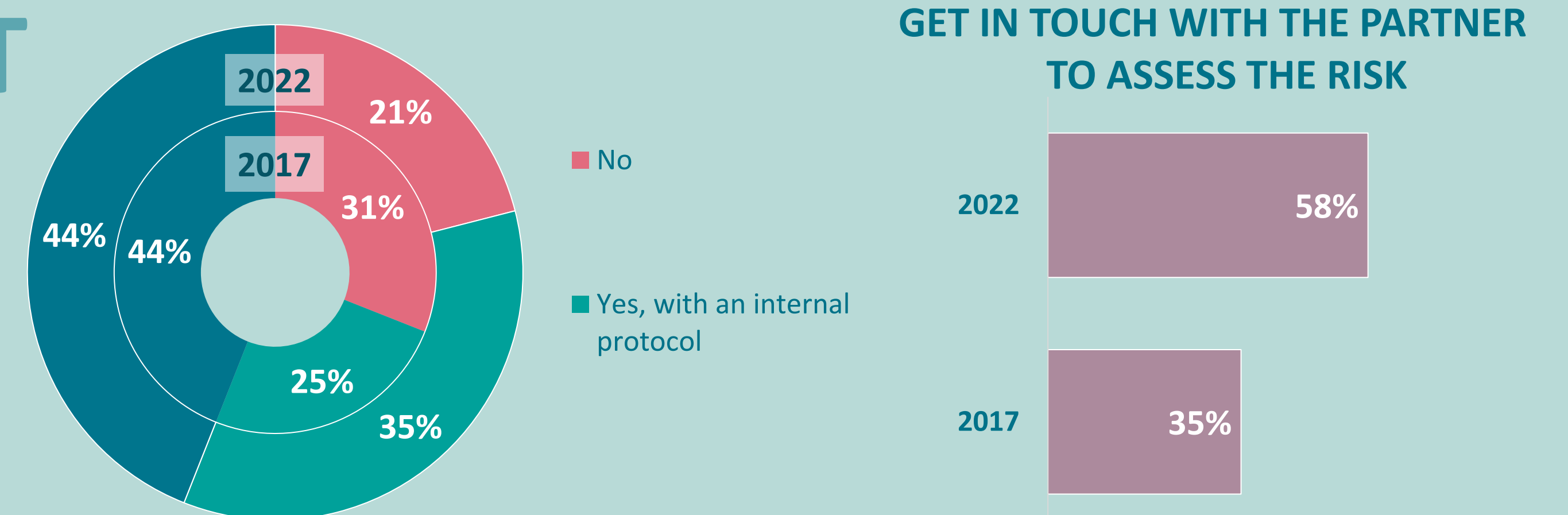
EVALUATION OF EFFECTIVENESS



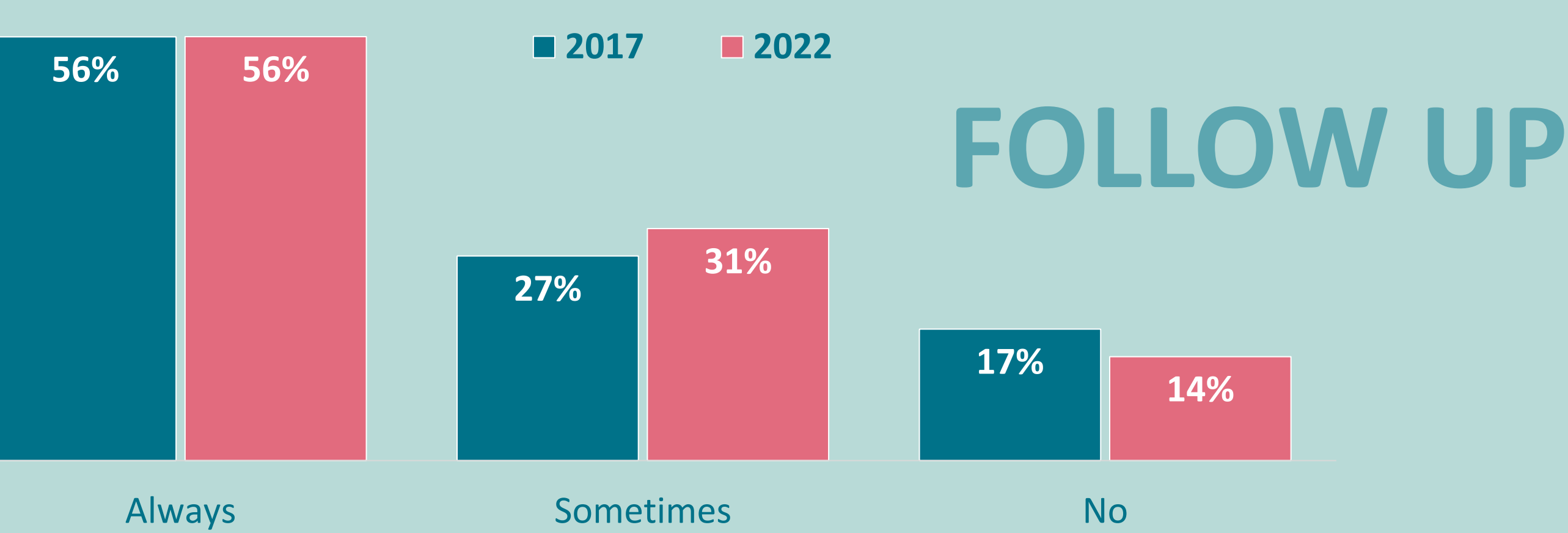
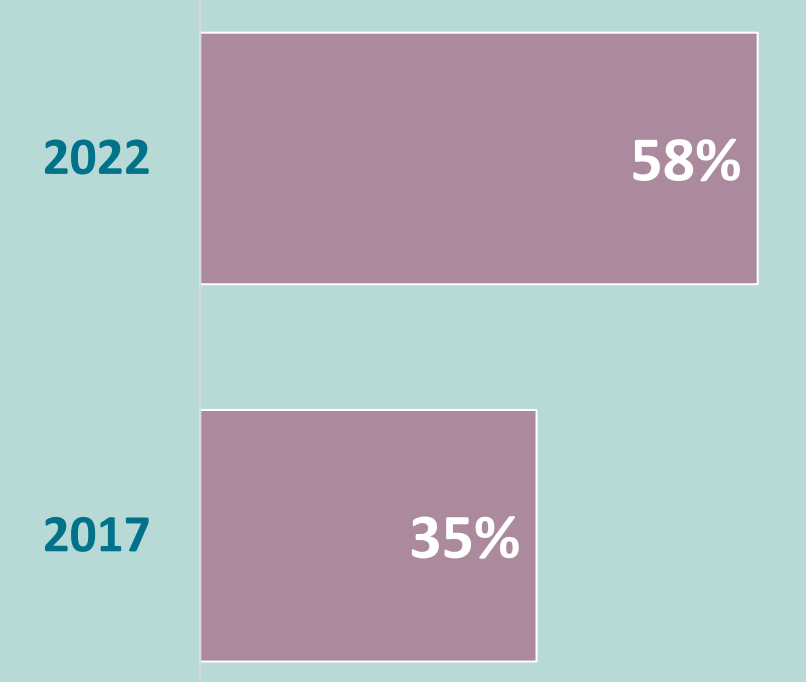
« It is important to have contact with partners, I mean, we are now going in that direction internationally, otherwise you don't have any feedback from reality. The perpetrators deny and trivialise, they sugarcoat everything in their own eyes, it's clear that they have no contact with reality »

« We decided not to have partner contact because there were some people within us who were very much against it. And also because we work in close contact with the Anti-Violence Centre of a certain area, the DIRE network [Women in Networks Against Violence], who are against partner contact »

RISK ASSESSMENT



GET IN TOUCH WITH THE PARTNER TO ASSESS THE RISK

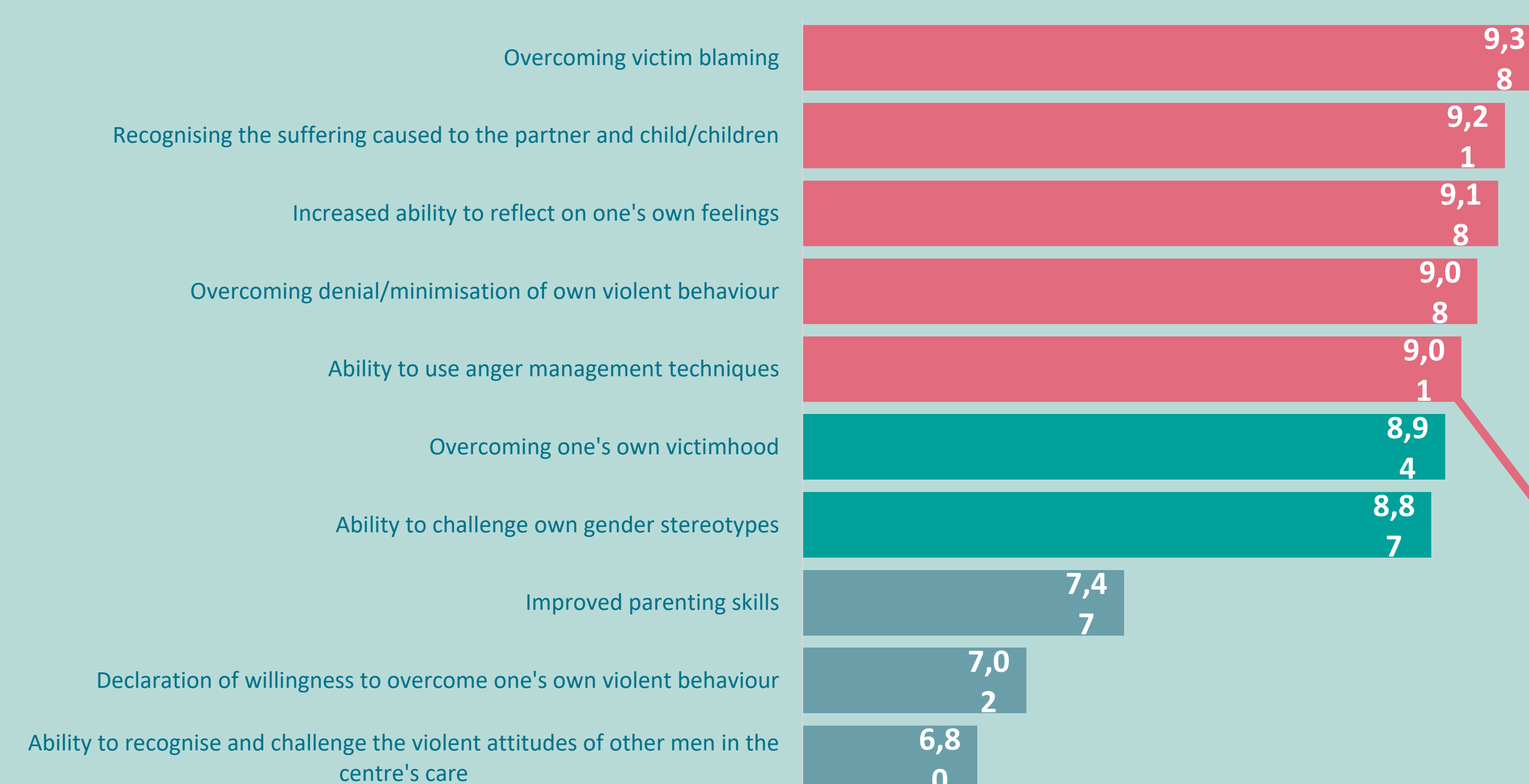


« If the follow up is required, someone will have to fund it »

« There is a constant feedback with the anti-violence territorial network, a kind of concrete follow-up, in itinere »

« If, over time, there is a new police report, we learn about it from other services with whom there is a continuous dialogue, including with regard to former users. The other tool is the feedback that colleagues from the anti-violence centres can give us »

EVALUATING CHANGE THROUGH PRACTICE-BASED INDICATORS



- 1) « [Men] always tend to blame. They talk about blame, never responsibility, of the wife or partner who put them in a position where they could not use other tools »
- 2) « The man then took responsibility for how he acted and realised the consequences, how much he was hurting his partner and his children »
- 3) « If we can get them to learn how to manage their emotions, that is a good goal, given the length of the intervention »
- 4) « Especially the issue of denial, minimization, they have to acknowledge it and take responsibility for it, without hiding behind the responsibility of others, that is the work »
- 5) « Our aim, apart from protecting the woman, is to be able to change the man's behavior so that he knows how to deal with his anger »